



The Signature of Quality®

INSTALLATION OPERATION INSTRUCTIONS

Self-Contained & Remote Models
Including Hybrid

RSS3-2B & -3B

RSS4-2B & -3B

RSS5-2B & -3B

RSS6-2B & -3B



KEEP THIS MANUAL FOR FUTURE REFERENCE
Engineering and technical data are subject to change without notice.

FEDERAL INDUSTRIES
Toll Free 1(800)356-4206

215 Federal Avenue
WI Phone (608)424-3331

Belleville, WI 53508
Fax: (608)424-3234

Contents

COVER.....	1
CONTENTS.....	2
INTRODUCTION.....	3
WARNING LABELS & SAFETY INSTRUCTIONS.....	4
PRE-INSTALLATION PROCEDURES.....	5
INSPECTION FOR SHIPPING DAMAGE.....	5
INSTALLATION INSTRUCTIONS.....	5
LOCATING THE DISPLAY CASE.....	5
LEVELING THE CASE.....	5
GRILL REMOVAL.....	5
CONDENSATE EVAPORATOR.....	6
ELECTRICAL INFORMATION & GROUNDING	7
OPERATING INSTRUCTIONS.....	8
CONTROLS.....	8
TEMPERATURE CONTROL.....	9, 10 & 11
PRESSURE CONTROL.....	12
INITIAL STARTUP.....	13
PLACING PRODUCT IN CASE.....	13
PERIODIC MAINTENANCE.....	14
SERVICE INFORMATION.....	14
PRE-SERVICE CHECKLIST.....	14
SPECIAL SERVICE SITUATIONS.....	16
SALE & DISPOSAL.....	16
OWNER RESPONSIBILITY.....	16
REFRIGERATION & ELECTRICAL DATA- RSS3, 4, 5 & 6 SC-2B & -3B.....	17
REFRIGERATION & ELECTRICAL DATA- REMOTE UNITS.....	18
REPLACEMENT PARTS- RSS3 & RSS4 -2B & -3B.....	19
REPLACEMENT PARTS- RSS5 & RSS6 -2B & -3B.....	20
WIRING DIAGRAM (RSS3, 4, 5, 6 –SC-2B & 3B).....	21
WIRING DIAGRAM (RSS3, 4, 5, 6 –R-2B & 3B).....	22

Information contained in this manual covers models:

RSS3SC-2B	RSS4SC-2B	RSS5SC-2B	RSS6SC-2B
RSS3SC-3B	RSS4SC-3B	RSS5SC-3B	RSS6SC-3B
RSS3R-2B	RSS4R-2B	RSS5R-2B	RSS6R-2B
RSS3R-3B	RSS4R-3B	RSS5R-3B	RSS6R-3B

Including Hybrid Models

INTRODUCTION

Thank you for purchasing a Federal Industries display case. This manual contains important instructions for installing and servicing the RSS, Refrigerated Self-Service Merchandisers. A repair parts list and wiring diagram are also included in the manual. Read all of these documents carefully before installing or servicing your case.



NOTICE

Read this manual before installing your case. Keep this manual and refer to it before doing any service on the equipment. Failure to do so could result in personal injury or damage to the case.



NOTICE

Installation and service of the electrical components in the case must be performed by a licensed electrician.

The portions of this manual covering electrical components contain technical instructions intended only for persons qualified to perform electrical work.



DANGER

Improper or faulty hookup of electrical components in the case can result in severe injury or death.

All electrical wiring hookups must be done in accordance with all applicable local, regional, or national standards.

Serial Number

Record the model and serial numbers of the case for easy reference. Always refer to both model and serial numbers in your correspondence regarding the case.

Case Model _____ Serial Number _____
Condensing Unit Model _____ Serial Number _____

This manual cannot cover every installation, use or service situation. If you need additional information, call or write us:

Warranty/Technical Service Department
Federal Industries
Toll Free (800)356-4206
WI Phone (608)424-3331
service@federalind.com

WARNING LABELS & SAFETY INSTRUCTIONS



This is the safety-alert symbol. When you see this symbol on your case or in the manual, be alert to the potential for personal injury or damage to your equipment.

Be sure you understand all safety messages and always follow recommended precautions and safe operating practices.



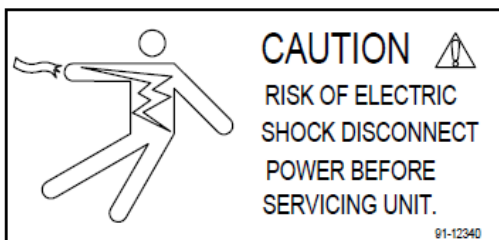
Notice to Employers

You must make sure that everyone who installs, uses, or services your case is thoroughly familiar with all safety information and procedures.

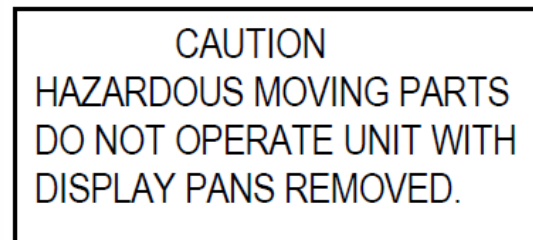
Important safety information is presented in this section and throughout the manual. The following signal words are used in the warnings and safety messages:

- DANGER:** Severe injury or death will occur if you ignore the message.
- WARNING:** Severe injury or death can occur if you ignore the message.
- CAUTION:** Minor injury or damage to your case can occur if you ignore the message.
- NOTICE:** This is important installation, operation, or service information. If you ignore the message, you may damage your case.

The warning and safety labels shown throughout this manual are placed on your Federal Industries case at the factory. Follow all warning label instructions. If any warning or safety labels become lost or damaged, call our customer service department at 1(800)356-4206 for replacements.



This label is located on the back of the case and on the front of the case behind the access panel.



This label is located below the display pan.

PRE-INSTALLATION PROCEDURES

Inspection for Shipping Damage

You are responsible for filing all freight claims with the delivering truck line. Inspect all cartons and crates for damage as soon as they arrive. If damage is noted to shipping crates or cartons or if a shortage is found, note this on the bill of lading (all copies) prior to signing.

If damage is discovered when the case is uncrated, immediately call the delivering truck line and follow up the call with a written report indicating concealed damage to your shipment. Ask for an immediate inspection of your concealed damage item. Crating material must be retained to show the inspector from the truck line.

INSTALLATION INSTRUCTIONS

Locating the Display Case

The case should be located where it is not subjected to the direct rays of the sun, heating ducts, grills, radiators, or ceiling fans, nor should it be located near open doors or main door entrances. Avoid locations where there is excessive air movement or air disturbances and avoid high humidity locations such as near cases with water misting or fogging devices.

The case requires a minimum of six (6") inch clearance at the rear of the unit for air discharge. Do not locate case with back tight against a wall. No clearance is needed on the sides of the unit.

Leveling the Case

The case must be level for proper drainage of defrost water to the condensate evaporator or floor drain. The case can be leveled by placing metal shims under welded steel frame as required.

To comply with NSFI requirements, the base of the unit should be sealed to the floor with NSFI listed sealant after installing and leveling unless a minimum of 6" high legs or casters are provided.

Grill Removal



DANGER: Electrical shock hazard. Do not operate unit with panels removed.

The front and rear grill require removal for case installation. Both grills are secured with self-tapping machine screws. To remove front grill remove the two screws, grille lifts up and tilts out at the bottom. The screws in the front grille are for shipping only; they do not need to be replaced after removal.

Both grills must be in place for proper operation of the case. Grills must be reinstalled after initial case installation.

Condensate Evaporator



NOTICE: Steam from the condensate evaporator may be visible around the base of the merchandiser during normal operation.

This merchandiser may be furnished with an electric condensate evaporator, or an electric condensate pump. Plumbing connections are not required, unless merchandiser is specifically ordered without a condensate evaporator or pump.

The condensate evaporator can be removed from the merchandiser, and the condensate drain can be plumbed to an external drain to conserve energy. To remove the condensate evaporator, disconnect the wires at the condensate evaporator. This must be done by a qualified electrician.

This is an open merchandiser and can produce a large amount of condensate water. To ensure that adequate evaporator capacity is available, a high wattage heater is used.

Make sure that the condensate drain line has not been dislodged during shipment and that the drain trap terminates properly over the water reservoir.

ELECTRICAL INFORMATION & GROUNDING

This Case Must Be Grounded



DANGER: Improper or faulty hookup of electrical components in the display case can result in severe injury or death.

All of the case electrical connections must be performed only by a licensed electrician.

All electrical wiring hookups must be done in accordance with all applicable local, regional, or national standards.

A separate circuit for each case is recommended to avoid the possibility of other appliances on the same circuit from overloading the circuit and causing malfunction.

The electrical service must be grounded upon installation.

This unit is designed for permanent connection to a power source. See the electrical data plate at the rear of the unit for proper circuit size and wire ampacity.

On self-contained models two (2) power supplies are required. Connect a separate 120 volt, 60 HZ, 1 phase power supply to the display case junction box and a separate 120 volt, 60 HZ, 1 phase power supply to the condensate evaporator junction box.

Cases with optional cord & plug (RSS3 & RSS4) require (1) 120v, 60hz, 1 phase 20 amp power supply, a lower wattage condensate pan or pump is used.

On remote models, one (1) power supply is required. Connect a 120 volt, 60 HZ, 1 phase power supply to the electrical junction box.



CAUTION! GFCI BREAKER USE REQUIREMENT
If N.E.C. (National Electric Code) or your local code requires GFCI (Ground Fault Circuit Interrupter) protection, you **MUST** use a GFCI breaker in lieu of a GFCI receptacle.

OPERATING INSTRUCTIONS

Controls

Refrigeration System Power Switch

This switch is located in the back of the unit and is accessible through an oval slot. This switch controls the refrigeration system, the evaporator fans, lights, and anti-sweat heaters. It does not control the power to the condensate water evaporator.

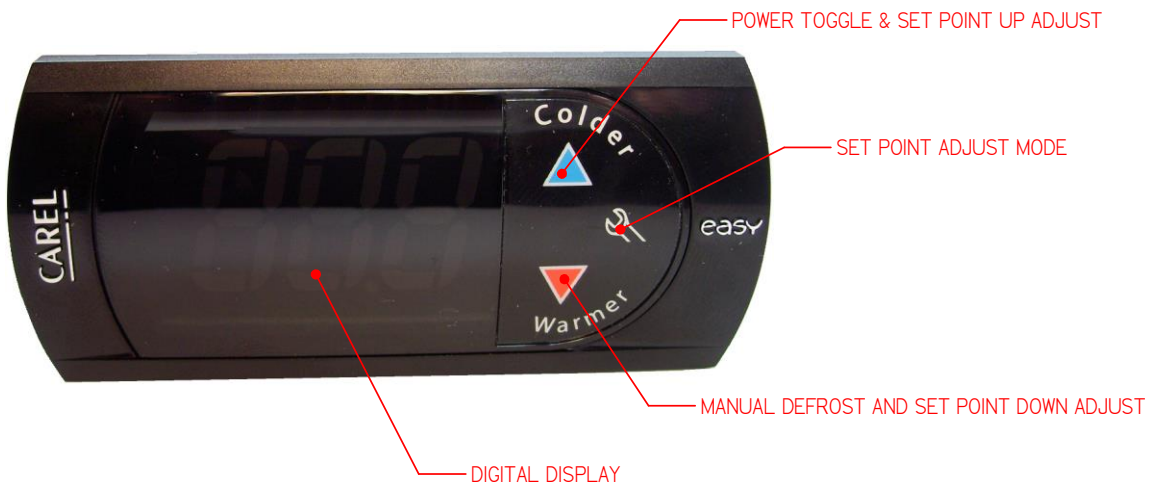
Light Switch (Optional Case Light)

If the unit is supplied with the optional light, it can be turned on and off by a switch located at the top light housing.

Temperature Control

Located in the left front behind the base grille on front air intake and discharge and hybrid display case or on the back right on rear air intake and discharge cases, the temperature control allows the user to adjust the temperature of the display merchandiser to their needs.

USING THE ELECTRONIC CONTROL



Button and Display Overview

	<i>Press and hold this button for 3s to turn system on (if off) or off (if on). Also used to adjust set point when in set point adjust mode</i>
	<i>Press to enter set point adjust mode, confirm set point changes, and mute alarms.</i>
	<i>Press and hold this button for 3 seconds to initiate a manual defrost (and cancel defrost if initiated), also adjusts set point down when in set point adjust mode</i>
	<i>Press both buttons simultaneously to check air stream probe temperature. This is not an indicator of product temperature.</i>

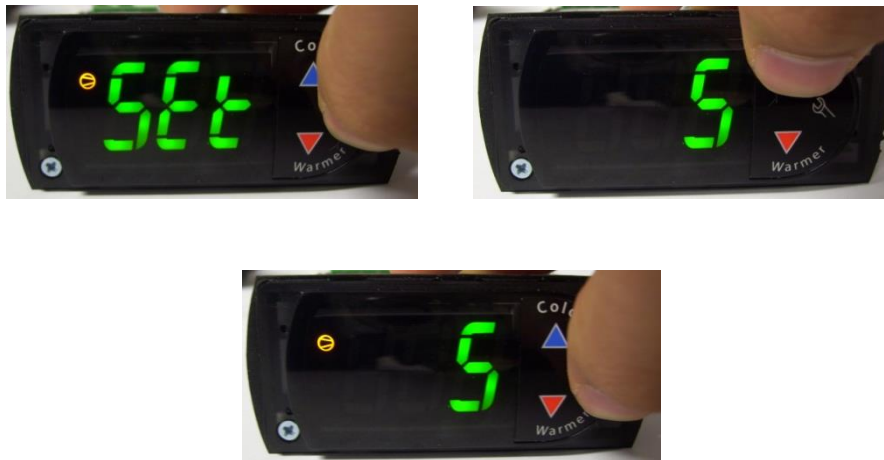
Powering on control

To turn power on to the refrigeration system press and hold, for three seconds, the blue up arrow on the control's keypad. The keypad will read "On" while the button is depressed. When the system powers on, the display will read the current set point (a number "1" through "9"). The orange compressor run indicator will illuminate on the display.



Adjusting the set point

The set point is what determines how cold the display case will hold food and beverage. To adjust the set point press and hold the wrench button until the display begins to flash a number (three seconds). Then use the up and down arrows of the keypad to scroll through the set point options. There are nine (9) available set points, the higher the number of the set point name, the colder the display case will run, with setting "9" being the coldest and setting "1" being the warmest. Once you have chosen your desired setting press the wrench button again to confirm your choice.



Entering manual defrost mode

In order to initiate a manual defrost press and hold the red down arrow for 3s. The control will read “dEF” while the button is being held. The defrost is initiated when the orange snowflake appears on the control display.

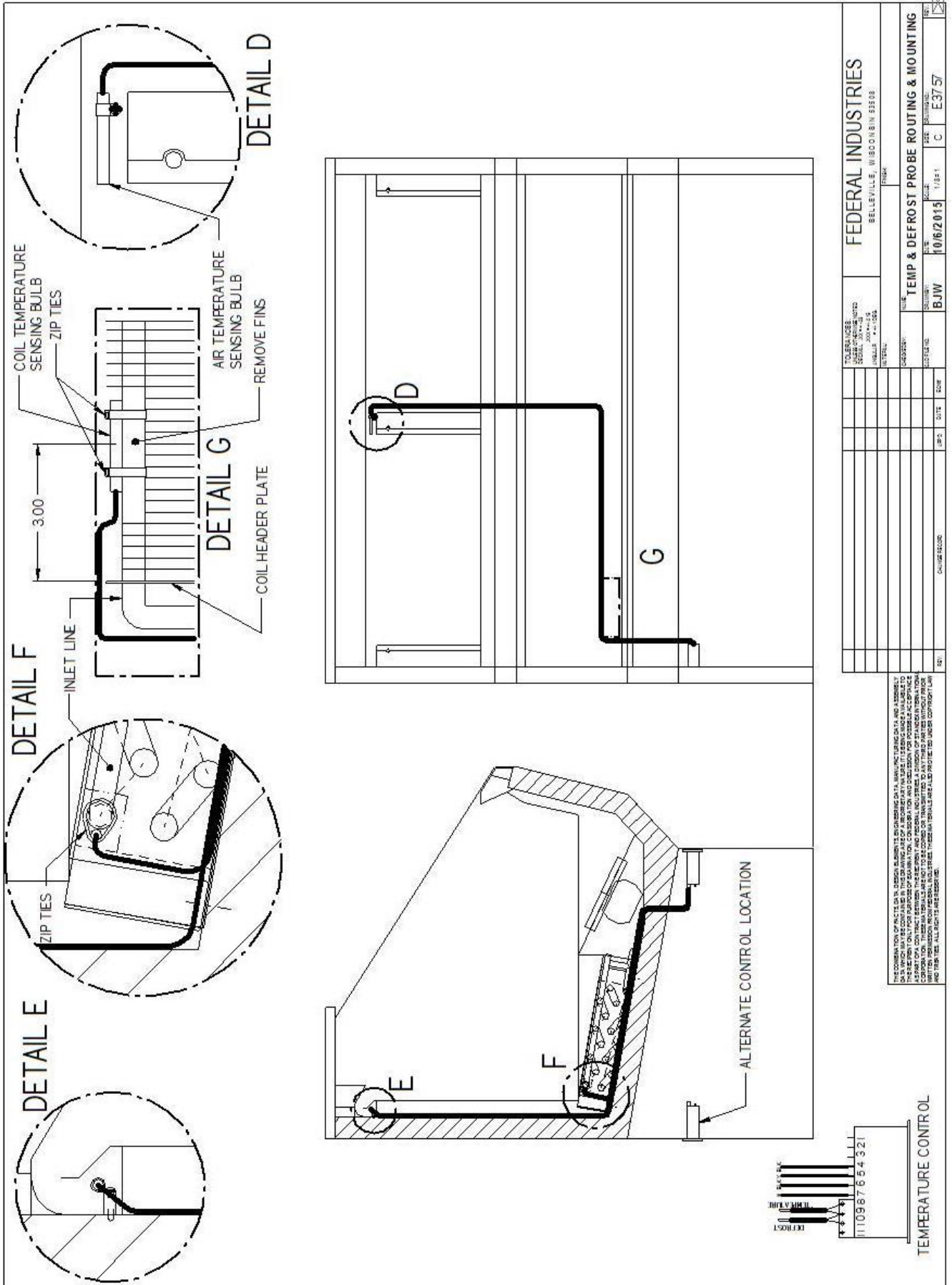


Error codes

It is possible for error codes to be displayed on the control screen. In the event of a malfunction an alarm will sound and a red ringing bell will be displayed on the screen. An error code or codes will flash intermittently on the display. If there are multiple codes, the display will continuously cycle through them. The following photo shows error code “E0” as an example next to the red bell.



You may mute the alarm by pressing and releasing the wrench button. The red ringing bell and all error codes will still be displayed. When the fault is remedied the control will return to normal operation and will automatically clear the codes from the display.



Dual Pressure Control (Self-Contained Models Only)

The dual pressure control is used as a safety device and is factory set. The pressure control works on a differential. The low-pressure side is a safety to protect the compressor in the case of refrigerant loss. The high-pressure side is a safety to protect from system failure causing too high of system pressure.

The high side of the pressure control is factory set to 400psi and is not adjustable.

Low side setting for the R134A/R513A cases are set at 40psi differential for the cutout and 50psi for the cut-in.

INITIAL STARTUP

After all the checks outlined in the installation section of this manual have been made, the case is ready to be put into service. Turn on the Power at the breaker box and flip the Power Switch and Light Switch on unit to the on position. Also ensure that the control is powered on as described above.

At start up from a warm unit, it is recommended that the temperature control is set to a warmer setting, such as 1. After the unit has gone through several cycles, adjust the control to a mid-range setting, then to a colder setting if necessary to maintain desired product temperature



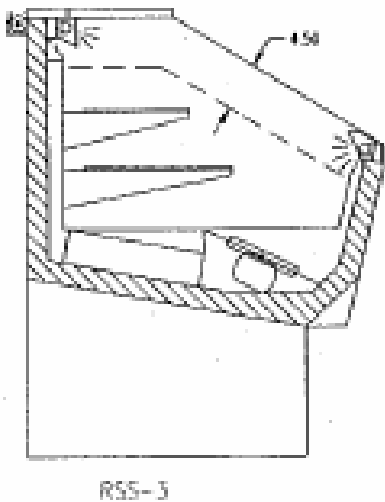
NOTICE:

This refrigerated display case is designed to operate in a maximum environment of 75°F (23.9°C) and 55% relative humidity. Exceeding these limits will cause poor case performance and excessive sweating.

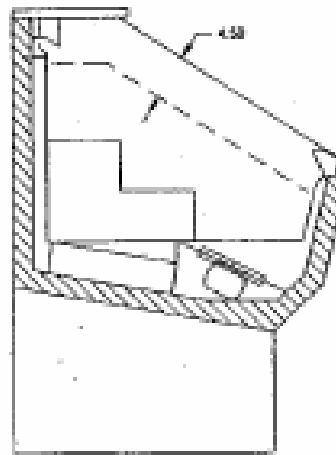
Placing Product in Case

Do not overload the case with product to a point where the top air discharge grill or the bottom air intake grill are blocked or where the air curtain created by the discharge air is blocked. The following diagram shows proper product loading.

DO NOT LOAD PRODUCT ABOVE DOTTED LINE.



RSS-3



RSS-2

Open refrigerated merchandisers are not intended as storage refrigerators and will not “pull down” product that is warm or at room temperature. Load case interior with only pre-chilled product.

Periodic Maintenance

Cleaning Condenser Coil

Turn power switch “off”

Remove front grill on front air intake models, rear grill on rear intake models, and vacuum the front surface of the condenser coil. Replace grill when done.

This should be done every one or two months as necessary.

Cleaning Case Interior

Turn power switch “off”

Clean interior surfaces with mild detergent and water. Do not use abrasive cleansers on case interior.

Step pans or shelving may be removed from the case for easy cleaning.

SERVICE INFORMATION

Before any service work is performed on the case, make sure all power is disconnected to the case.

To find a service company in your area, please visit our website at www.federalindustries.com. There you can also find self-service tools to help you get the answers you need faster!

For Warranty Service Requests & ALL Technical Support please contact:

- Phone: (800) 356-4206 and choose the Tech Support/Warranty Option
- Email: Service@federalind.com

For Warranty Compressors please contact the Parts Department:

- Phone: (800) 356-4206 and choose the Warranty Parts Option
- Email: Parts@Federalind.com



Federal Industries has partnered with Parts Town for ALL Non-Warranty Part Identification, Pricing, Lead Times, Orders & Freight Quotes. Please contact Parts Town directly if you need parts:

- Website: PartsTown.com
- Email: CustomerService@PartsTown.com
- Phone: 833-809-8188

Pre-Service Checklist

You may avoid the cost and inconvenience of an unnecessary service call by first reviewing this checklist of frequently encountered situations that can cause unsatisfactory case performance.



WARNING:

Before servicing case turn off power at the main breaker of fuse box.

Pre-Service Checklist

Case Does Not Operate

Check for disconnected power supply.

Check that power switch is “on”.



CAUTION! GFCI BREAKER USE REQUIREMENT
If N.E.C. (National Electric Code) or your local code requires GFCI (Ground Fault Circuit Interrupter) protection, you MUST use a GFCI breaker in lieu of a GFCI receptacle.

Case Temperature Too Warm

Check that top air discharge opening and/or bottom air intake grille are not blocked.

Check for a blocked or dirty condenser coil.

Check that there are no outside air disturbances in or around case. These disturbances can be caused by nearby doors or entrances, overhead ceiling fans, or air diffuser vents, direct sunlight or other heat sources. The location of open refrigerated merchandisers is critical to case performance.

Make sure that warm product is not being placed inside case. All products must be pre-chilled prior to loading for proper case performance.

Check temperature/pressure control for proper settings.

Check cold air flow. Lack of, or no air flow may indicate a blocked evaporator coil or defective evaporator fan motor. Contact a qualified service company if there is no air flow inside the case.

Lights Do Not Operate (Optional Equipment)

Check that light switch is “on”.

Check that light bulb(s) are properly seated in light holders.

Overflow of Condensate Evaporator

Check that there is a power supply to the condensate evaporator assembly. On self-contained models this is on a separate electrical circuit.

Check that the drain line is properly located over the water reservoir.

Check room ambient conditions. The room environment should not exceed 75F ambient and 55% humidity conditions.

Special Service Situations

There are rare occasions when the refrigerant charge must be evacuated from a case in order to perform service work. In those situations, Federal Industries recommends that the refrigerant charge be evacuated into a recovery system to prevent the possibility of hydrochlorofluorocarbons (HCFC's) from being released into the atmosphere. The release of HCFC's into the atmosphere is a potential source of global warming.

If moisture or liquid is observed around or under a Federal Industries case, an immediate investigation should be made by qualified personnel to determine the source of moisture or liquid. The investigation made should determine if the case is malfunctioning or if there is a simple housekeeping problem.

Moisture or liquid around or under a case is a potential slip/fall hazard for persons walking by or working in the general area of the case. Any case malfunction or housekeeping problem that creates a slip/fall hazard around or under a case should be corrected immediately.

SALE & DISPOSAL

Owner Responsibility

If you sell or give away your Federal Industries case, you must make sure that all safety labels and the Installation-Service Manual are included with it. If you need replacement labels or manuals, Federal Industries will provide them free of charge. Contact the Customer Service Department at Federal Industries at 1(800)356-4206.

The Customer Service Department at Federal Industries should be contacted at the time of sale or disposal of your case so records may be kept of its new location.

If you sell or give away your Federal Industries case and you evacuate the refrigerant charge before shipment, Federal Industries recommends that the charge be evacuated into a recovery system to reduce the possibility of HCFC's from being released into the atmosphere. The release of HCFC's into the atmosphere is a potential source of ozone depletion.

REFRIGERATION & ELECTRICAL DATA

SELF-CONTAINED MODELS

Model	RSS3SC-2B RSS3SC-3B	RSS4SC-2B RSS4SC-3B	RSS5SC-2B RSS5SC-3B	RSS6SC-2B RSS6SC-2B
Refrigerant Charge (R134A) BEFORE 01/01/20	15 oz.	15oz.	26 oz.	26 oz.
Refrigerant Charge (R513A) AFTER 01/01/20	14oz.	14oz.	25 oz.	25 oz.

ALL MODELS ARE 120 VOLTS, 1 PHASE, 60 HERTZ, 2 WIRE

	AMPS	AMPS	AMPS	AMPS
Compressor				
RLA	8.1	8.8	10.1	10.1
LRS	40.0	58.8	68.0	68.0
Condenser Fan Motor	0.5	0.5	1.3	1.3
Evaporator Fan Ea. *(2)	0.3	0.3	*0.3	*0.3
Anti-Sweat Heater	0.1	0.1	0.2	0.2
Lights	0.26	0.26	0.26	0.26
Condensate Evaporator *(Separate Power Supply)	5.0	*10.0	*10.0	*10.0
Condensate pump (optional)	1.0	1.0	1.0	1.0

Refer to the rating plate data attached to the rear of the case for Maximum Fuse Size and Minimum Circuit Ampacity.

REFRIGERATION & ELECTRICAL DATA

REMOTE MODELS

Model	All Remotes
Refrigerant	R449A

ALL REMOTE MODELS ARE 120 VOLTS, 1 PHASE, 60 HERTZ, 2 WIRE

AMPS

Anti-Sweat Heater	0.2
Evaporator Fan Motor	0.3 ea.
Lights	0.26
Condensate pump	1.0
Condensate Evaporator (optional)	10.0

Refer to the rating plate data attached to the rear of the case for Maximum Fuse Size and Minimum Circuit Ampacity.

REMOTE MODELS DISCONTINUED AFTER 01/01/20

REPLACEMENT PARTS

MODELS RSS3 & RSS4 INCLUDING HYBRID

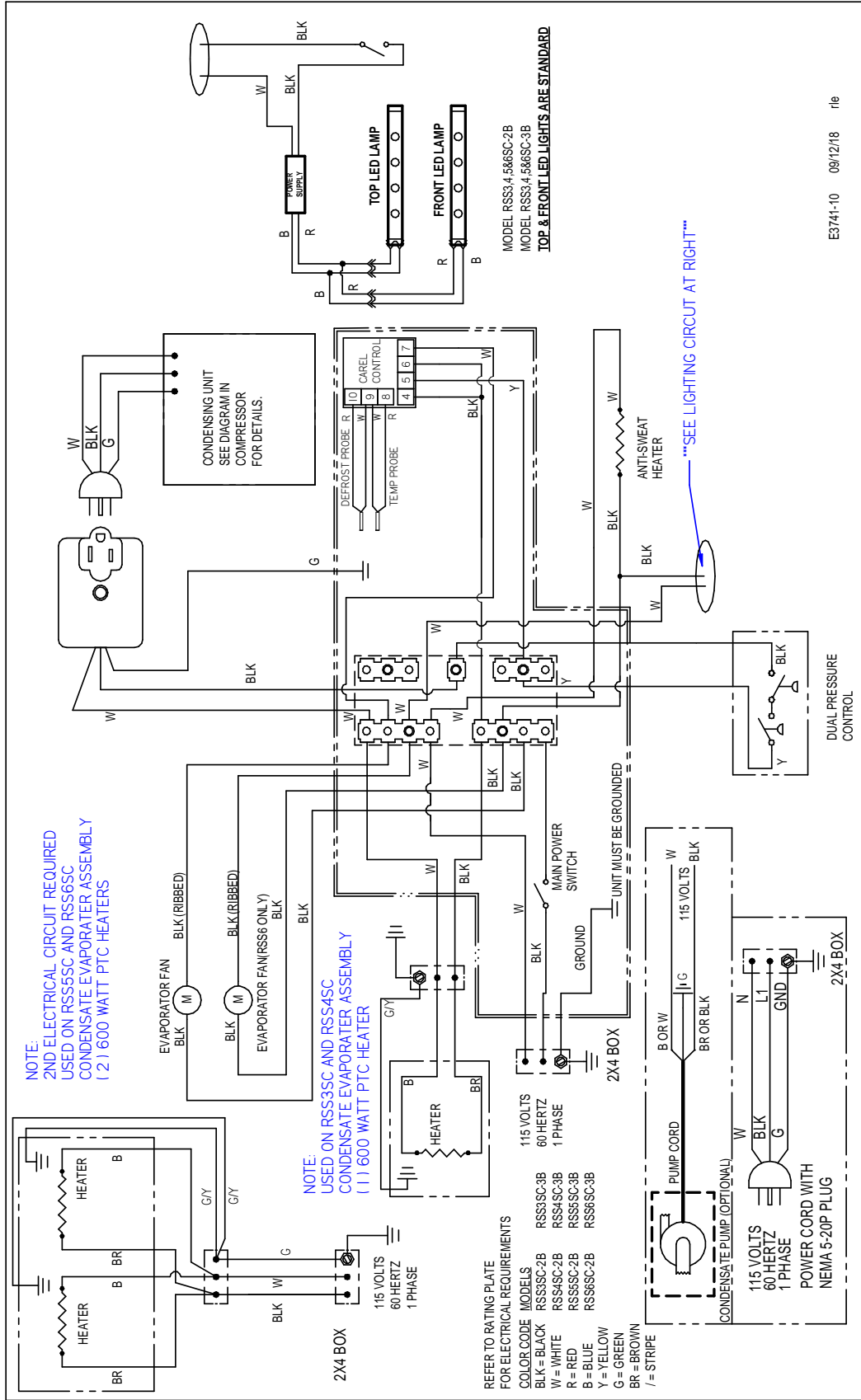
Part Description	Part Number	
	RSS3	RSS4
<u>Refrigeration System</u>		
Condensing Unit (Self-Contained Only)	30-20347	30-14218
Compressor (Replacement)	30-20380	30-15036
Refrigeration Control (Electronic)	32-19864-9	32-19864-9
Control Probe (2)	32-19866	32-19866
Pressure Control	32-51009	32-51009
Solenoid Valve (Remote Only)	32-14325	32-14325
Coil Solenoid Valve (Remote Only)	41-14324	41-14324
Evaporator Coil	33-10946	33-50042
Expansion Valve	32-12625	32-12625
Evaporator Fan Motor	41-11628	41-11628
Evaporator Fan Blade	72-11450	72-13316
Filter Drier	32-12626	32-12626
Toggle Switch	41-10974	41-10974
Anti-Sweat Heater	43-14892	43-14891
Terminal Block	45-11056	45-11056
Thermometer	32-13662	32-13662
<u>Condensate Evaporator</u>		
Heating Element 600W	40-19331	40-19331
OBS Entire Assembly 600W	SA5406-1	SA5406-1
Entire Assembly 600W replaces SA5406-1	SA5406-4	SA5406-4
Condensate Pan Bracket use with SA5406-4	M19017-4 qty 2	M19017-4 qty 2
OBS Entire Assembly 1200W	SA5406-12	SA5406-12
Entire Assembly 1200W replaces SA5406-12	SA5406-15	SA5406-15
Condensate Pan Bracket use with SA5406-15	M19017-4 qty 2	M19017-4 qty 2
Condensate Steam Notice Tag	91-13038	91-13038
<u>Optional Condensate Pump</u>		
Condensate Pump 120V	47-15686	47-15686
Hose 50'	15-17337	50-17337
<u>Standard Lights</u>		
LED Light 24V	42-20871-25C35 (2)	42-20871-38C35 (2)
Power Supply 24V	39-20986	39-20986
Light Clip	67-20869 (4)	67-20869 (4)
Light Switch	41-11066	41-11066
Cord LED 12"	43-20860-1B	43-20860-1B
<u>SHELVING</u>		
Shelf Metal 10"	M12738-3A	M12738-2A
Shelf Metal 14"	M12739-3A	M12739-2A
Shelf Wire 10"	63-13904-1	63-13896-1
Shelf Wire 14"	63-13905-1	63-13897-1
Shelf Glass 10"	52-13616	52-15006
Shelf Glass 14"	52-13617	52-15007
Glass Shelf Clips	67-72582	67-72582
Shelf Bracket 10"	67-12887	67-12887
Shelf Bracket 14"	67-12888	67-12888
Shelf Standard	67-12112	67-12112
Wire Steps	63-11713	63-14961
Step Riser Bottom 5 ¼ x 18 ½ x length	SA3124-1	SA3124-2
Step Riser Top 5 ¼ x 9 ¼ x length	SA3123-1	SA3123-2
Step Riser Bottom 5 x 15 x length	SA4079-1	SA4079-2
Step Riser Top 5x7 ½ x length	SA4078-1	SA4078-2
<u>Miscellaneous Components</u>		
Night Curtain	65-19459	65-19460
End Glass Clear	50-19414-1	50-19414-1
End Glass Reflective Right Hand	50-19414-3R	50-19414-3R
End Glass Reflective Left Hand	50-19414-3L	50-19414-3L
Anti-Sweat Heater	43-14892	43-14891

REPLACEMENT PARTS

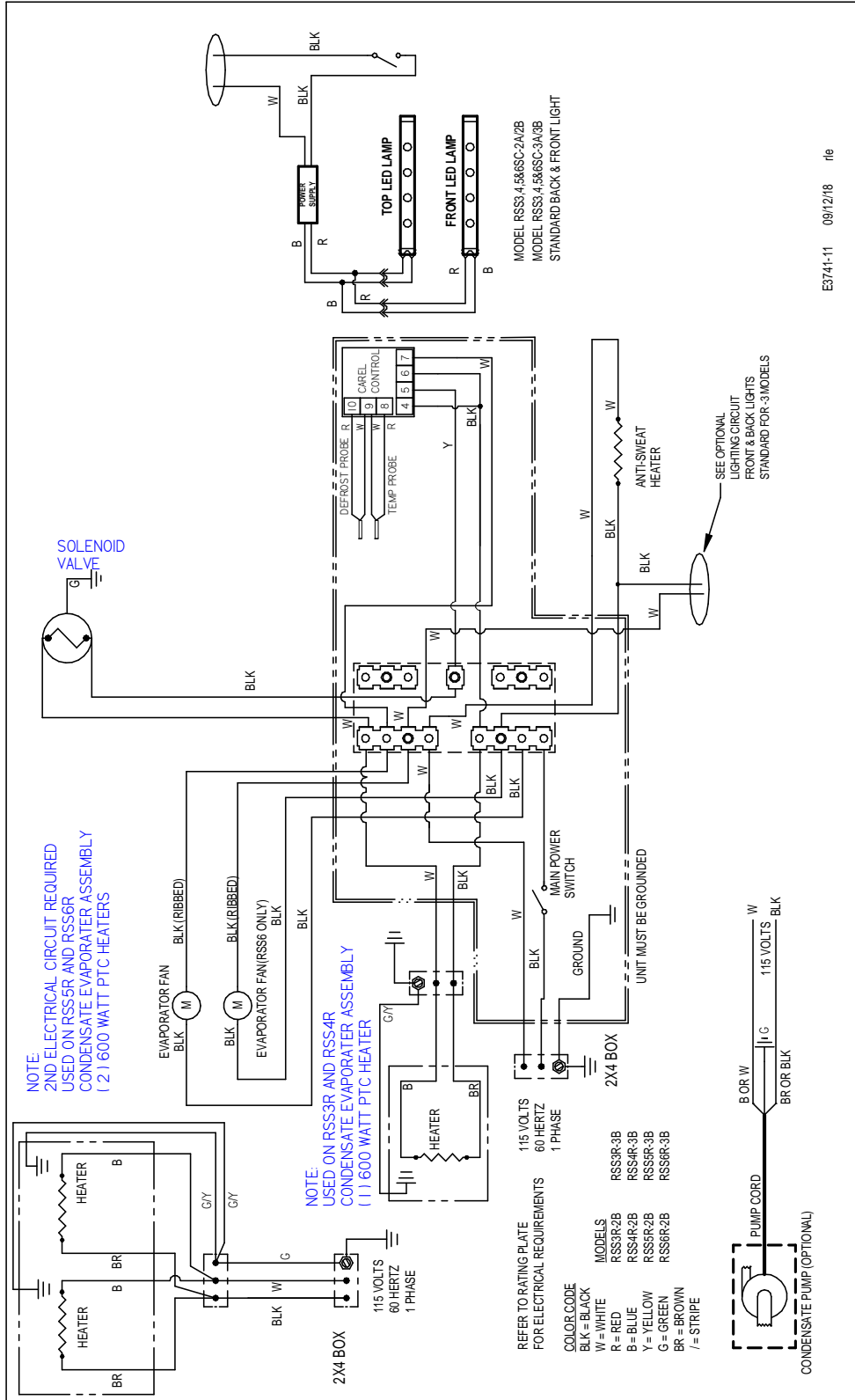
MODELS RSS5 & RSS6 INCLUDING HYBRID

Part Description	Part Number	
	RSS5	RSS6
<u>Refrigeration System</u>		
Condensing Unit (Self-Contained Only, Before 1/1/2022)	30-14219	30-14219
Condensing Unit (Self-Contained Only, After 1/1/2022)	30-21494	30-21494
Compressor (Replacement)	30-15038	30-15038
Refrigeration Control (Electronic)	32-19864-9	32-19864-9
Control Temperature Probe (2)	32-19866	32-19866
Pressure Control	32-51009	32-51009
Solenoid Valve (Remote Only)	32-14325	32-14325
Coil Solenoid Valve (Remote Only)	41-14324	41-14324
Evaporator Coil	33-12068	33-12068
Expansion Valve	32-12625	32-12625
Evaporator Fan Motor	41-11628	41-11628 (2)
Evaporator Fan Blade	72-12254	72-11450 (2)
Filter Drier	32-11561	32-11561
Toggle Switch	41-10974	41-10974
Anti-Sweat Heater	43-12317	43-12893
Terminal Block	45-11056	45-11056
Thermometer	32-13662	32-13662
<u>Condensate Evaporator</u>		
Heating Element (2) 600W	40-19331	40-19331
Entire Assembly 1200W	SA5107	SA5107
Condensate Steam Notice Tag	91-13038	91-13038
<u>Optional Condensate Pump</u>		
Condensate Pump 120V	47-15686	47-15686
Hose 50'	15-17337	50-17337
<u>Standard Lights</u>		
LED Light 24V	42-20871-48C35 (2)	42-20871-60C35 (2)
Power Supply 24V	39-20986	39-20986
Light Clip	67-20869 (6)	67-20869 (6)
Light Switch	41-11066	41-11066
Cord LED 12"	43-20860-1B (2)	43-20860-1B (2)
<u>SHELVING</u>		
Shelf Metal 10"	M12738-4A	M12738-5A
Shelf Metal 14"	M12739-4A	M12739-5A
Shelf Wire 10"	63-13900-1	63-13902-1
Shelf Wire 14"	63-13901-1	63-13903-1
Shelf Glass 10"	52-12124	52-12126
Shelf Glass 14"	52-12125	52-12127
Glass Shelf Clips	67-72582	67-72582
Shelf Bracket 10"	67-12887	67-12887
Shelf Bracket 14"	67-12888	67-12888
Shelf Standard	67-12112	67-12112
Wire Steps	63-12362	63-12363
Step Riser Bottom 5 ¼ x 18 ½ x length	SA3124-3	SA3124-4
Step Riser Top 5 ¼ x 9 ¼ x length	SA3123-3	SA3123-4
Step Riser Bottom 5 x 15 x length	SA4079-3	SA4079-4
Step Riser Top 5x7 ½ x length	SA4078-3	SA4078-4
<u>Miscellaneous Components</u>		
Night Curtain	65-19458 (2)	65-19300 (2)
End Glass Clear	50-19414-1	50-19414-1
End Glass Reflective Right Hand	50-19414-3R	50-19414-3R
End Glass Reflective Left Hand	50-19414-3L	50-19414-3L
Anti-Sweat Heater	43-12317	43-14893

WIRING DIAGRAM- RSS3, 4, 5, 6 SC-2B & -3B



WIRING DIAGRAM- RSS3, 4, 5, 6 R-2B & -3B



California Residents Only.

 **WARNING**

This product can expose you to chemicals including chromium which is known to the State of California to cause cancer and birth defects or other reproductive harm. For more information go to

www.P65Warnings.ca.gov

REV	CHANGE RECORD	APP'D	DATE	ECN#
B	UPDATED DUAL PRESSURE CONTROL NOTE, ADDED REV BLOCK	ADC	8/5/19	3506
C	ADDED R513A REFRIGERANT CHARGE	BJW	11/6/19	3556
D	ADDED BEFORE & AFTER DATES FOR C.U. ON RSS5 & RSS6, C.U. BEFORE 1/1/2022 30-14219, AFTER 1/1/2022 30-21494	ADC	11/9/2021	3742
E	UPDATED CONDENSATE PANS FOR RSS3 & RSS4	BJW	5/13/24	3912